

THE BEST COMBINATION OF ANALOG AND IP

HYBRID DIGITAL VIDEO RECORDER
16CH LE5016D/4016D, 8CH LE5008D/4008D

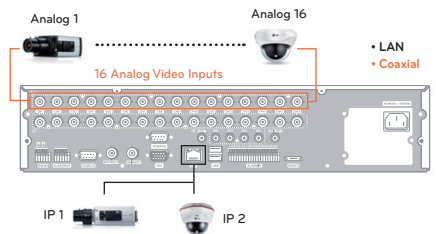


LE5016D/4016D



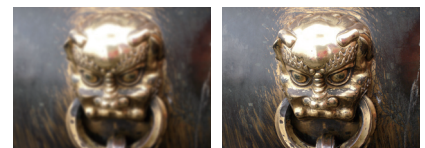
TWO IP INPUT CHANNELS

Two IP input channels enable video recording from IP cameras as well as analog cameras, thereby giving users more flexibility in recording and rearranging their existing security system.



H.264 CODEC

H.264 enables the transmission of higher-quality images at the same rate as does MPEG4. Also H.264 has a higher compression ratio than MPEG4, and can thus reduce its bandwidth and storage usage.



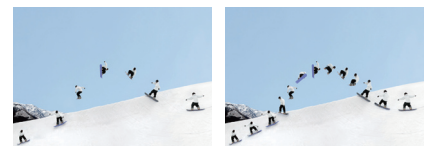
MPEG4

H.264



REAL-TIME RECORDING

Images are recorded in real-time, thus providing the best monitoring and playback environment.



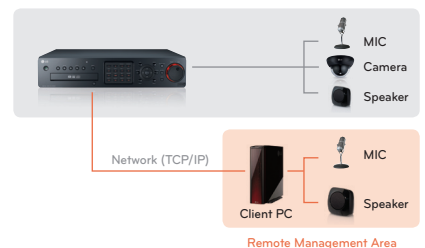
Non Real-Time

Real-Time



2-WAY AUDIO

Two-way communication lets the DVR operator engage in audio communication with a manager in a remote area, thus making remote management possible.



ATM/POS LINKAGE

ATM and POS data can be stored with visual data, thereby effectively responding to financial safety accidents.



LE5008D/4008D

EXCELLENT IMAGE QUALITY WITH H.264 COMPRESSION

HYBRID DIGITAL VIDEO RECORDER
16CH LE5016D/4016D, 8CH LE5008D/4008D

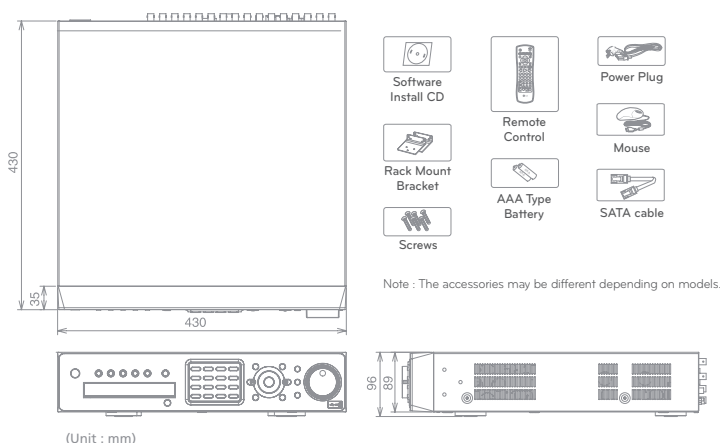


SPECIFICATIONS

Model			LE5016D/LE4016D	LE5008D/LE4008D
Video	Input	Analog Camera	16	8
		IP Camera	2	2
	Output	Loop Through	16	8
		Composite	1	1
		VGA	1	1
		Spot	1	1
Audio	Input		4	2
	Output		2	2
Alarm	Input		16	8
	Output		4	2
		Alarm Notification to remote PC		Yes
Recording	Frame Rate (/sec)	NTSC	480 fps (LE5016D) / 480 fps (LE4016D) @ 352x240	240 fps (LE5008D) / 240 fps (LE4008D) @ 352x240
			480 fps (LE5016D) / 240 fps (LE4016D) @ 704x240	240 fps (LE5008D) / 120 fps (LE4008D) @ 704x240
			480 fps (LE5016D) / 120 fps (LE4016D) @ 704x480	240 fps (LE5008D) / 60 fps (LE4008D) @ 704x480
			400 fps (LE5016D) / 400 fps (LE4016D) @ 352x288	200 fps (LE5008D) / 200 fps (LE4008D) @ 352x288
		400 fps (LE5016D) / 200 fps (LE4016D) @ 704x288	200 fps (LE5008D) / 100 fps (LE4008D) @ 704x288	
		400 fps (LE5016D) / 100 fps (LE4016D) @ 704x576	200 fps (LE5008D) / 50 fps (LE4008D) @ 704x576	
	Quality Level		5 Levels	
	Recording Mode		Continuous / Alarm / Motion / Instant / Panic / Text	
Search	Playback Function		FF / FB / Frame Advance / Go to First / Go to Last	
		Search Mode	Calendar, Date/Time, Event (Motion, Alarm), Bookmark, Text	
Display	Frame Rate (/sec)	NTSC	480 fps	240 fps
		PAL	400 fps	200 fps
Storage	Internal HDD	Interface Type	SATA II	
			Max. Capacity	Up to 4 HDDs
	External HDD	Interface Type	e-SATA	
			Max. Capacity	Unlimited
	Internal ODD		Yes	
Backup	Backup Interface		3 x USB 2.0 / 1 x e-SATA / Network	
		Supportable Device	Memory Stick / CD-RW / DVD-RW / External HDD	
Serial I/F	PTZ Control		RS-485 (x2)	
		ATM / POS	RS-232C (D-SUB9)	
Network	Network Connection		Ethernet 10 / 100 / 1000M, RJ-45	
		Network Transmission Speed	Up to 120 fps	
		NTP (Network Time Protocol)	Yes	
		Bandwidth Control	Yes	
Security	User Level Management		Yes	
		Data Integrity Check (Watermark)	Yes	
Power Source		AC Free 100-240V 50/60Hz		
Operating Temperature / Humidity		0°C - 40°C / 0% - 80%RH (Non-Condensing)		
Weight (w/o HDD)		6.85 Kg		6.97 Kg
Dimension (W x D x H)			430 x 430 x 96 mm	

* Exact products and specifications shown may vary by geographic region and are subject to change without notice. Actual products may differ from the images appearing in the catalog.

DIMENSION



FEATURES

- 2 IP + 16 Analog
- H.264 Compression
- Multiplex (Simultaneous Live/Playback, Recording, Backup, Networking)
- Various Recording Resolutions
- Real-Time Recording @ D1 (LE5016D/5008D)
- 2-Way Audio Support
- Real-Time Recording @ CIF (LE4016D/4008D)
- ATM / POS Linkage



The eco-friendly label is attached to those products which have passed LG Electronics' rigorous environmental criteria that evaluate 6 hazardous materials (lead, mercury, cadmium, etc.)



Business Solutions Company

Security Business Team
LG Twin Towers, 20 Yeouido-dong,
Yeongdeungpo-gu, Seoul 150-721, Korea
Phone : +82-2-3777-5184
Fax : +82-3777-5185
<http://www.lg.com/global/security>
E-mail : lgsecurity@lge.com

